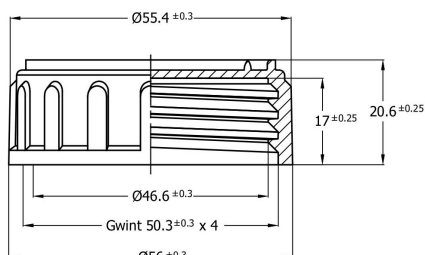
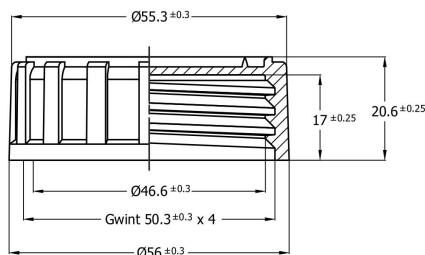


Polyethylene cap K50/

K50/...-A model A



K50/...-B model B



Order code

K50/ colour / sealing insert - cap model

Example: K50/B/P-A (white K50 cap with polyethylene foam, model A)
K50/C/IO-B (red K50 cap, induction sealing with venthyl, model B)

Marking of standard colors:

B white, Y yellow, O orange, C red, F violet, N blue, Z green, BR brown, CZ black.

Dedicated client colors will be prepared for approval. Please use RAL or Pantone symbol.

Sealing insert types

- I - induction sealing
- IO - induction sealing with venthyl
- P - polyethylene foam
- PO - polyethylene foam with venthyl

Important information

- recommended closing force 4-5 Nm with K50 cap series. Exceeding 6 Nm may damage the insert or cap and also result in leaks.
- do not cause the seal density above 40%.
- for proper operation the cap requires the correct neck geometry and a compatible container.
- during the heating season, it is recommended to store the caps for at least 24 hours in a heated room before use.

Packing - Palletizing

| | | | |
|------------------------|-----------------|----------------|---------------|
| Packing units/box | 700 pcs/box | Pallete | 120 x 80 cm |
| Pallete - 30 boxes | 21 000 pcs | Pallete weight | 295 kg |
| | | Pallete height | 210 cm |
| Cap with insert weight | 12.4g ± 0.5 | Box WxLxH | 385x385x380mm |
| Material HDPE | Hostalen GC7260 | Box weight | 9,2 kg |

edit date 11.02.2020r.

NS Automatyka Sp. z o.o.
37-310 Nowa Sarzyna, ul. Leśna 2a
tel.: +48 17 2411380
zamowienia@nsautomatyka.com.pl
www.nsautomatyka.com.pl



VAT EU PL8161501450
REGON 690690533
BDO 00002881


ISO 9001: 2015